



Making CtP work for you



Quality and reliability
at an affordable price imaging
8-up, 4-up and 2-up plates





Key Benefits

- **Quality**
Cobra's imaging quality is superb with its powerful 60mW violet laser. Its precise optical system is capable of imaging with screening resolutions of over 175 lpi, giving excellent results on plate.
- **Speed**
The wait for plates is over with Cobra's high speed spinner, designed for fast imaging. Combined with easy plate handling, this enables Cobra 8 to output up to 16 plates per hour, including plate load/unload time.
- **Reliability and Accuracy**
Cobra 8 uses a high precision internal drum and violet laser technology – a combination proven to give the most reliable and consistently accurate imaging on metal plate.
- **Affordable Performance**
Cobra's low cost of ownership and competitive return on investment results in one of the most affordable CtP systems on the market.
- **Ease of Use**
Cobra's plate management console software has been written specifically to make platemaking easy – it is so simple that anyone can use the system to produce plates quickly and reliably.
- **Versatility**
With its standard USB 2.0 interface, Cobra 8 can be connected to any suitable Windows PC RIP that outputs 1-bit TIFF bitmaps. This fast industry standard connection ensures that Cobra is a truly "open" system.
- **Future Proof**
Cobra 8 is capable of imaging all silver and photopolymer violet plates currently on the market, to give a wide range of plate options both now and into the future.

Cobra 8 is a manual load-unload CtP engine designed specifically for the B1/8-up commercial print market. It exposes violet metal plates at high resolution, using high precision internal drum imaging optics and a 60mW laser.

The pre-punched plate is placed directly into the drum by the operator, and located in the U notch registration system. Vacuum is then applied to hold the plate in perfect register while it is imaged at a resolution of 2540 dpi (100 dpmm) at a speed of 6mm per second. An 8-up B1 plate takes only three minutes to image, regardless of content.



The Cobra 8 system includes a high-spec workstation running a Torrent PS RIP, with a full complement of software applications that enables rapid processing and output of jobs to the Cobra 8.

8-up Metal CtP

Computer to Plate

COBRA 8

Making CtP work for you

The benefits of using Cobra 8 in your workflow are compelling. Its quality and speed of output let you produce plates to meet the ever increasing demands of today's print shop. Cobra's simple and clever design, with remote diagnostics, ensures an extremely high level of reliability with minimum downtime. This will put you ahead of your competition in the quest to satisfy your customers' high expectations.

Combining all these benefits with low cost of ownership, Cobra provides affordable metal plate production with an excellent price/performance figure. Additional features such as CIP3/4 ink-key setting and ROOM proofing help to ensure an investment geared for long-term success.

Using HighWater's Barcode ID software, which generates a unique identification mark on the plate, users can easily retrieve jobs for re-making plates.

Registration Configurations:

Cobra 8 has a U notch registration bar to accept pre-punched plates, where the 425 mm notches can be switched in or out. There are two options of register system:

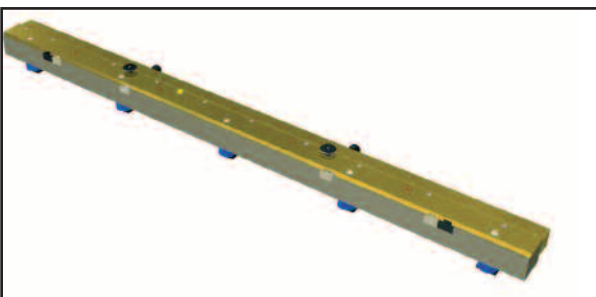
standard 780 mm and standard 425 mm; or
standard 830 mm and standard 425 mm

making it suitable to image B1, B2 and B3 (landscape format) plates.

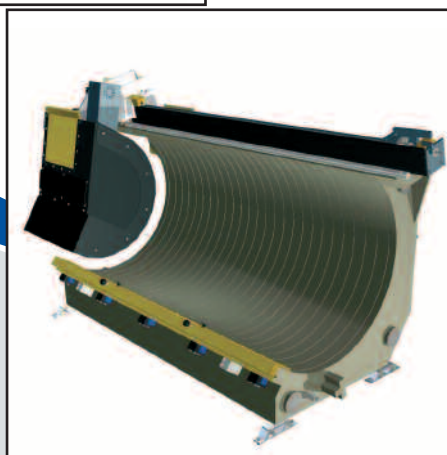
User Interface

A new Java based user interface for 'point and click' plate production has been specifically designed for Cobra. With 'at a glance' multiple views, a home view showing previews and status of current jobs, overviews of all queues and completed plates, it is a powerful and highly effective tool in the plate production process. (See PC photograph, bottom right.)

Registration bar

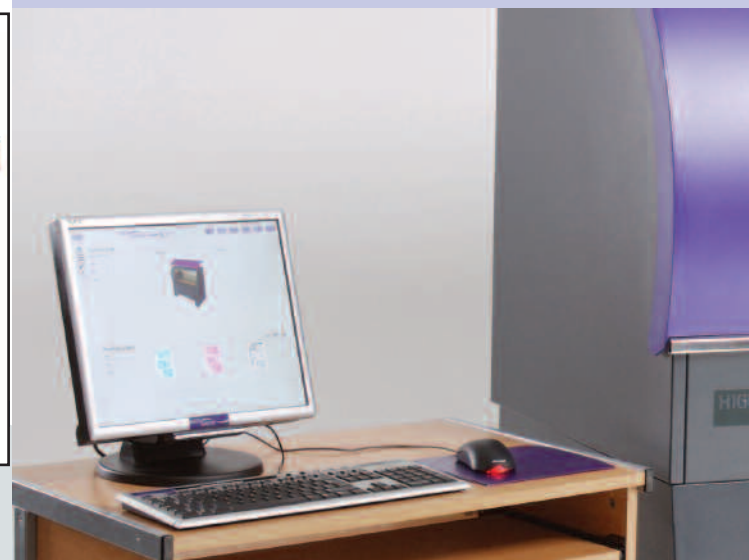


Internal drum imaging



Cobra System Options

RIP	HWRoam TrapPro JDF compatible
Proofing	PixelProof ROOM solution Torrent ProofReady
Press Data	InkMonitor Light InkMonitor Pro
Tools	Barcode ID Plate Identification Mark



COBRA 8

Computer to Plate

Specification:

Laser type	Violet laser diode, 405nm, 60mW
Drum	270 mm radius, 180° aluminium alloy with hard anodised finish
Max plate	B1/8 up – 1080 x 850 mm, 0.3 mm thick (42.5" x 33.4" x 0.012")
Min plate	B3/2 up – 510 x 400 mm, 0.15 mm thick (20.1" x 15.75" x 0.006")
Grip edge	15 mm (.6") minimum at front edge of plate
Image area	1080 x 835 mm (42.5" x 32.8") maximum
Spot size	10 microns
Resolution	100 dpmm, 2540 dpi
Repeatability	± 5 microns image to image; ± 25 microns plate to plate
Imaging speed	6 mm per second, using 36,000 rpm single-facet spinner
Throughput	Up to 16 8-up; 20 4-up and 28 2-up plates per hour
Plate handling	Manual
Plate types	Violet sensitive aluminium plates – silver and photopolymer Yellow safe light required for plate handling
Registration	U notch register system standard 780mm and 425mm; or U notch register system standard 830mm and 425mm
Approvals	CE certification: EN61000 for EMC include FCC Rule CFR47, EN60950 LVD, MET-UL approval: IEC950/UL950
Dimensions	1725 x 1600 x 900 mm (w x h x d) - 68" x 63" x 35.5" (lid closed)
Weight	400 kg (engine and front-end PC),
Power	Engine: 98-132 VAC or 196-264 VAC at 50/60Hz, single phase less than 500 VA load 2 x Vacuum pumps : either 100v 50/60Hz IEC unit or 230v 50/60Hz EN unit (separate connection)
Operating Environment	+15°C to +25°C, 10% to 50% relative humidity (non condensing)
Interface	USB 2.0 connection to external Control PC
Cable	Maximum USB cable length 5 metres (16 feet)
Platform	External PC with Windows XP
Applications	Engine Control and Plate Management Software
File formats	Accepts 1-bit TIFF bitmap files, compressed formats CCITT Group 4, LZW and PackBits
Diagnostics	Remote diagnostics as standard
Job Archival	Writeable CD ROM
RIP	Torrent (Harlequin) PostScript 3 RIP, PDF 1.6 compliant

*All trademarks are the copyright of their respective owners and their use in this publication is acknowledged and recognised.
HighWater Designs Ltd reserves the right to change specifications without notice.*

HighWater Designs Ltd
Cotswold Building, The Barlands
London Road,
Cheltenham, GL52 6UT UK
Telephone: +44 (0) 1242 542100
Facsimile: +44 (0) 1242 251600
www.highwater.co.uk

HIGH
WATER