

## Wide-format printing solutions

**Flatbed and roll-fed printers, UV inks, specialist media and business support to suit all production requirements**

FUJIFILM's range of wide-format printing solutions encompasses both market-leading flatbed and roll-fed models, covering a variety of formats and productivity levels to suit all point-of-sale, display and signage production requirements. These are complemented by high performance UV inks and media, together with complete finance and support packages.



- ▶ Flatbed productivity from 16 to 600m<sup>2</sup>/hr
- ▶ Flatbed edge-to-edge imaging up to 3.2 x 2.2 m
- ▶ Roll-fed or cut-sheet/rigid media up to 48 mm thick
- ▶ Roll-fed wide-gamut photo quality printing to A0 size
- ▶ UV inks for instant drying, rich colour and durability
- ▶ Complete end-to-end product, media and support packages available

## ► Wide-format printers, media and support to suit all applications

Whether you're looking to cost-effectively add wide-format printing to your offset litho capabilities, to replace or complement conventional screen printing equipment or require further capacity for an established wide-format business, FUJIFILM has the printers, inks, media and support you need. From roll-fed aqueous inkjet to UV-cured rigid media up to 48 mm thick, our range of printers provides the quality, reliability and productivity to ensure that you meet production deadlines and exceed customer expectations. A full range of large format printers, ink, media, software, tools and displays are also provided within FUJIFILM's euromedia offering, which also includes advice, ongoing support and finance options – everything you need to make a success of your large-format work.

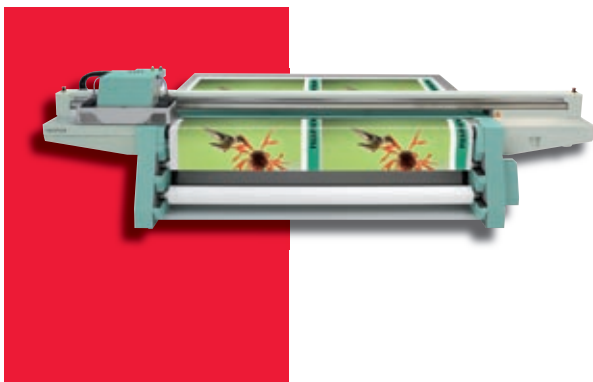
### Epson 11880 – roll-fed print up to 1626 mm wide

The Epson 11880 sets new standards in high quality aqueous inkjet print. The eight-colour UltraChrome K3 ink set gives an extended colour gamut that meets international proofing standards, coupled with significantly improved colour stability under different viewing conditions. Variable size droplet technology maximises both productivity and quality, allowing an A0 photo lab quality print to be produced in only 11 minutes.



### Acuity HD 2504 – fine photo quality at an entry-level price

The Acuity HD 2504 incorporates the latest wide-format UV digital imaging technology. Specifically designed for print applications requiring the finest detail from high resolution images or graphics, it can image both rigid and roll-fed media to produce superb quality display and point-of-sale materials at an unprecedented price point.



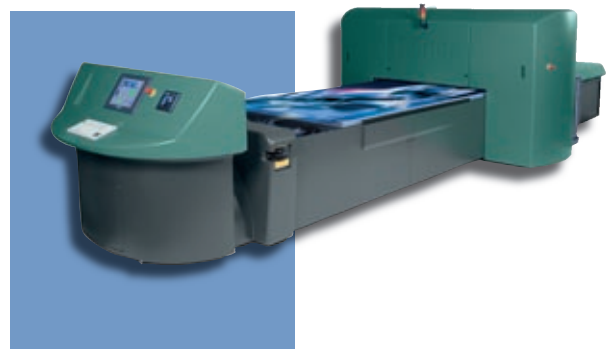
### Inca Spyder 320 – flexible quality and productivity options

The versatile Spyder 320 range of UV flatbed printers offers imaging areas up to 3.2 x 1.6 m, with a choice of upgradeable productivity and quality options from 35 to 60 m<sup>2</sup>/hr for display/PoS work and support for a range of media up to 30 mm thick including poster and backlit materials. Coupled with Uvijet Ultratone colours for exceptional spot colour reproduction, the Spyder 320 is suitable for a wide range of production applications.



### Inca Turbo Plus / Turbo Plus 220 – world's most popular high volume flatbed

The production speed and reliability of the Columbia Turbo have made this platform the most popular high-volume UV flatbed in the world. The Turbo Plus provides a cost-effective method of producing short-run display, point-of-sale and signage at up to 3.2 x 1.6 m (Turbo Plus) or 3.2 x 2.2 m (Turbo Plus 220). Both models use a moving bed for maximum productivity of up to 170 m<sup>2</sup>/hr (posters), can support additional colours and can handle irregular materials up to 40 mm thick.

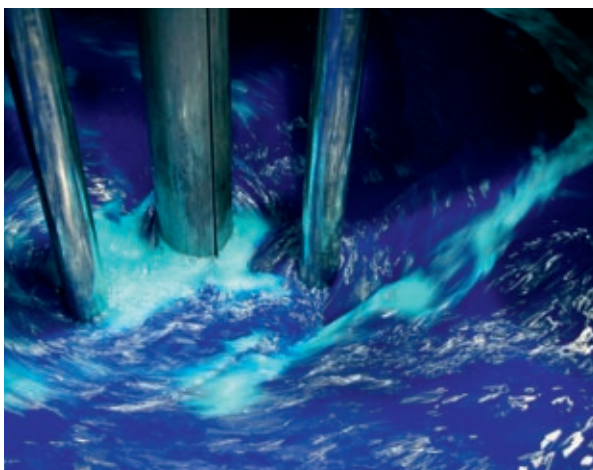


### Inca Onset – maximum productivity and reliability

Proven technology, limited operator involvement and fully automatic handling make the Onset the most productive and reliable alternative to screen and offset print technologies for point-of-sale graphics. The Onset offers the highest quality via Spectra print heads developed by FUJIFILM Dimatix, coupled with output speeds of up to 600 m<sup>2</sup>/hr. A built-in automatic head cleaning station ensures consistent quality throughout extended production and increases ease of use.

### Uvijet inks – vibrant and durable

Uvijet UV-curable inks manufactured by FUJIFILM Sericol are specifically formulated to match the productivity and application range of Inca and FUJIFILM flatbed devices. Uvijet inks deliver vibrant colours with extended gamut, thanks to Micro-V pigment dispersion technology. Durability of up to two years for both internal and external applications is achieved through improved cure performance which reduces edge chipping when prints are guillotined, routed or folded.



### euromedia®

FUJIFILM's wide-format inkjet printers, inks and media are part of the euromedia range. With some 10,000 customers across Europe, the euromedia solution is designed specifically for large-format print providers, and includes hand-picked 'best-in-class' products which are evaluated and qualified by industry experts before being integrated into end-to-end print solutions. The offering includes more than 650 different media products for any application, large format hardware, software, accessories, tools and display equipment. These are complemented by finance packages and field technical support, including engineering, application and colour management, provided by FUJIFILM technical staff.

### Excellight – effective display, night and day

For combined backlit and reflective display use, Excellight film is the ideal partner for FUJIFILM wide-format inkjets. Offering excellent sharpness and high colour density, Excellight allows you to produce high quality photographic images for both backlit and reflective use, with comparable image quality in both modes, allowing energy savings in use and no requirement for mirror printing for backlit operation, saving ink. No diffuser is required either, as the film itself is opaque.

## Specifications

	Onset	Turbo Plus 220	Turbo Plus	Spyder 320 Q	Spyder 320	Spyder 320-e	Acuity HD 2504	Epson Stylus Pro 11880
Print area (minimum/maximum, mm)	- / 3200 x 1524	148 x 210 / 3200 x 2200	148 x 210 / 3200 x 1600	148 x 210 / 3200 x 1600			- / 1260 x 2510	roll width 254 – 1116
Print speed (m <sup>2</sup> /hr)	satin standard 500 (600 with bi-di facility); satin quality 420; gloss standard 420; gloss quality 350	poster 170; display/POS 120; high quality 60; backlit 54		display/POS: 37; high quality: 29; backlit: 20	poster: 60; display/POS: 55; high quality: 43; backlit: 25	poster: 35; display/POS: 25; high quality: 20; backlit: 10	Production: 16; quality: 11 (12 roll-to-roll); fine art: 9 (8 roll-to-roll); fine art matte: 8 (9 roll-to-roll)	draft: 35.4
Media thickness (maximum, mm)	10 with automation; 15 in manual mode	40		30			48	0.5 roll, 1.5 sheet
Print finish	satin or gloss	satin		satin				according to media
Ink type	Uvijet UV ink							Epson Ultrachrome K3 pigment
Basic colours	CMYK							C, LC, Vivid M, Vivid LM, Y, K, LK, LLK
Light colours	-	IM, IC (option)		option		upgrade available	no	included in basic
White	-	option		option		upgrade available	no	no
Uvijet Ultratone colours	-	option		option			no	no
Power requirement	380 – 420 V AC, 3-phase, 415 V 3-phase positive	400 – 440 V AC, 3-phase		220 – 240 V AC, single-phase			200 – 240 V AC, single-phase	220 – 240 V AC, single-phase
Factory air requirement (psi)	printer: 90; AutoSpeed unloader: 50	90		96				n/a
Space requirement (m)	21 x 13	15 x 8.1	15 x 7.5	6 x 7			dimensions (W x D) 4.1 x 2 / 4.1 x 2.9 roll-to-roll option	dimensions (W x D x H) 2.4 x 0.7 x 1.2 approx
Weight (kg)	printer 12,000; AutoSpeed unloader 2500	4500	3750	2500			550 / 716 roll-to-roll option	141

All FUJIFILM's wide-format printers support edge-to-edge direct printing on flexible (Acuity HD 2504 requires roll-to-roll option) and rigid media using piezo drop-on-demand print heads; the flatbed models (all units except Epson Stylus Pro 11880) have full vacuum tables for media holding, and all of these but the Acuity HD 2504 feature micro height adjustment control, support double-sided printing and have dual fixed registration points.

Please contact your local FUJIFILM partner for further information.

# FUJIFILM

**FUJIFILM Deutschland  
Niederlassung der  
FUJIFILM Europe GmbH**  
T +49 211 5089 255  
grafische\_systeme@fujifilm.de  
www.fujifilm.de

**FUJIFILM UK Ltd**  
T +44 1234 245 245  
marketing.fgs@fujifilm.co.uk  
www.fujifilm.co.uk/gs

**FUJIFILM Graphic Systems  
France SAS**  
T +33 1 64 76 71 00  
commercial@fujigraphic.fr  
www.fujifilmgraphic.fr

**FUJIFILM Danmark A/S**  
T +45 45 66 22 44  
fujifilm@fujifilm.dk  
www.fujifilm.dk

**FUJIFILM Italia S.r.l.**  
T +39 02 89 58 21  
graphic.arts@fujifilm.it  
www.fujifilm.it